

BIOSS®

CORONARY BIFURCATION STENTS

BIOSS®

CORONARY BIFURCATION STENTS

BIODEGRADABLE POLYMER

BIODEGRADABLE POLYMER

Innovative bifurcation stent system:

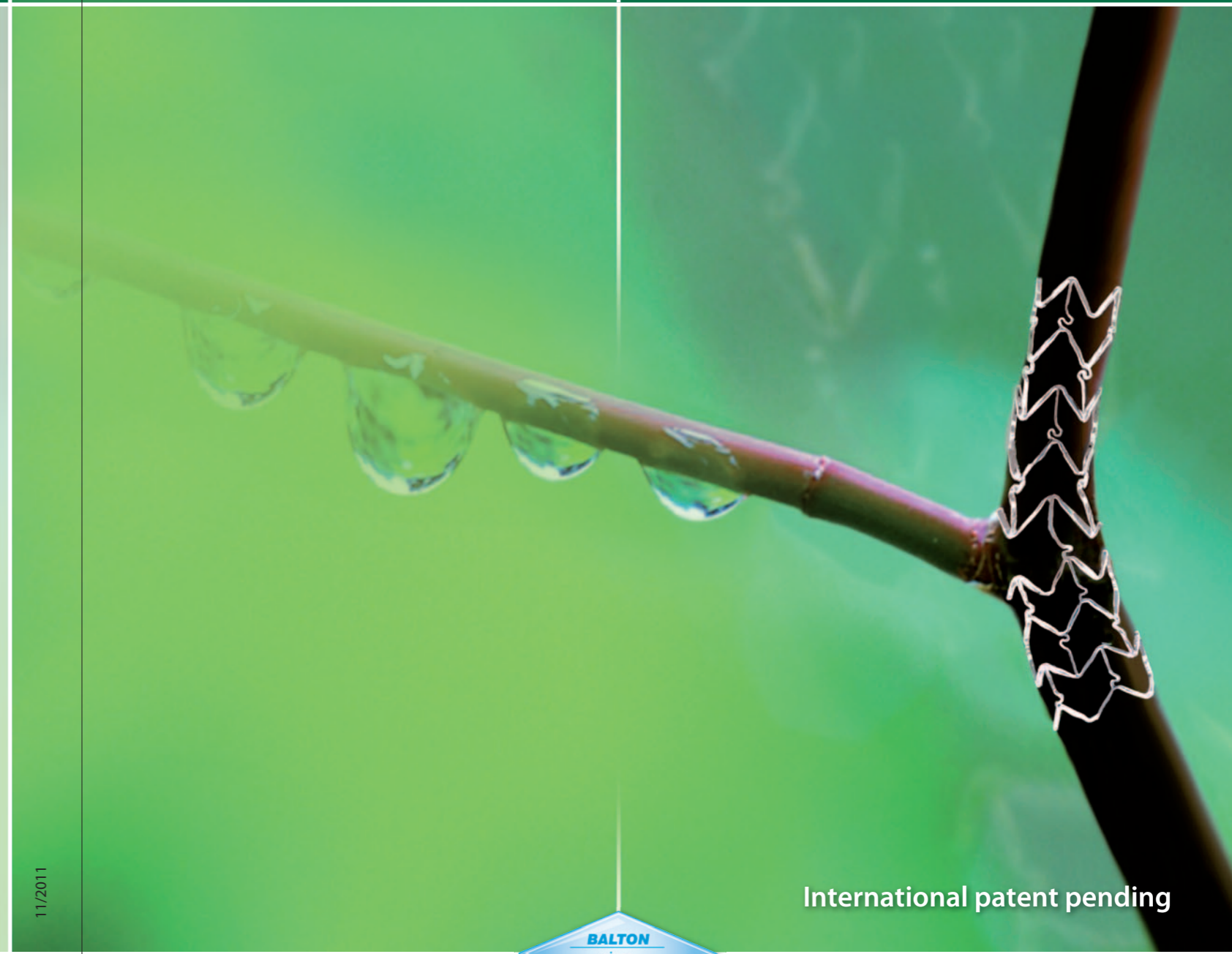
- One profiled balloon with diameters corresponding to dimensions of the coronary bifurcation vessels
- Unique configuration of the delivery system ensuring safety and efficacy during the stent implantation procedure
- Delivery system minimizes the negative effects of procedure, protecting the carina tip from being crushed or damaged
- Large cell of the stent in place of side branch entrance gives possibility to enter the SB with any standard size conventional stent
- Precision of implantation procedure thanks to three radiopaque markers

Technical data overview:

Stent platform material	316LVM stainless steel
Catheter coating	hydrophilic
MRI	safe
Ferromagnetism	none
Radiopacity	excellent
Radial force	high
Pushability and trackability	excellent
Inflation and deflation time	very short
Proximal shaft diameter	2F (0.65 mm)
Distal shaft diameter	2.7F (0.90 mm)
Compatible guide wire	max. .014"
Compatible guiding catheter	5F (.056")
Nominal pressure	10 atm
Rated Burst Pressure	16 atm
Delivery system type	Rapid Exchange
Catheter length	140 cm

Caution:
This publication could include technical or other inaccuracies or typographical errors. Changes are periodically added to the information on herein; these changes will be incorporated in the new editions of the publication. Balton Ltd. may make improvements and/or changes in the product(s) described in this publication at any time. This publication is only a commercial information and cannot be handled the commercial offer in the meaning of the art.66 §1 of Polish Civil Code.

11/2011



International patent pending

BALTON®

03-152 Warszawa, POLAND, ul. Modlińska 294
tel.: +48 (22) 597 44 00, fax: +48 (22) 597 44 44
e-mail: balton@balton.pl, www.balton.pl

BALTON®

BALTON
since
1980

CE 1023

Bifurcation optimized stents for coronary vessels with one profiled balloon, guided on single .014" guide wire for simple and shorter implantation procedure. Dedicated stents system prevents the side branch from occlusion and carina tip from being crushed or damaged:

BIOSS[®] expert Paclitaxel eluting coronary bifurcation stent with RX delivery system

Catalog Number	Nominal stent diameter [mm]		Nominal stent length [mm]
	Dist	Prox	
ZSTB2.50x3.25x1514L	2.50	3.25	15
ZSTB2.75x3.50x1514L	2.75	3.50	
ZSTB3.00x3.50x1514L	3.00	3.50	
ZSTB3.00x3.75x1514L	3.00	3.75	
ZSTB3.50x4.25x1514L	3.50	4.25	
ZSTB3.75x4.50x1514L	3.75	4.50	
ZSTB2.50x3.25x1814L	2.50	3.25	18
ZSTB2.75x3.50x1814L	2.75	3.50	
ZSTB3.00x3.50x1814L	3.00	3.50	
ZSTB3.00x3.75x1814L	3.00	3.75	
ZSTB3.50x4.25x1814L	3.50	4.25	
ZSTB3.75x4.50x1814L	3.75	4.50	
ZSTB2.50x3.25x2314L	2.50	3.25	23
ZSTB2.75x3.50x2314L	2.75	3.50	
ZSTB3.00x3.50x2314L	3.00	3.50	
ZSTB3.00x3.75x2314L	3.00	3.75	
ZSTB3.50x4.25x2314L	3.50	4.25	
ZSTB3.75x4.50x2314L	3.75	4.50	

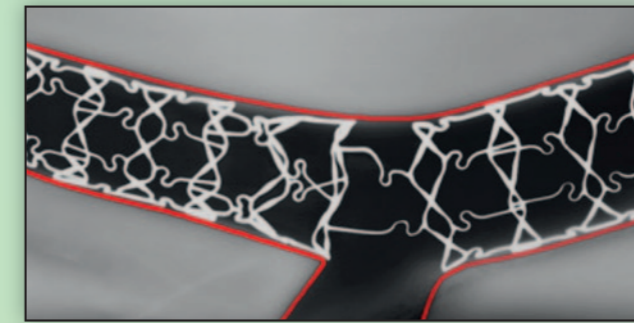
BIOSS[®] LIM Sirolimus eluting coronary bifurcation stent with RX delivery system

Catalog Number	Nominal stent diameter [mm]		Nominal stent length [mm]
	Dist	Prox	
ZSTB2.50x3.25x1514S	2.50	3.25	15
ZSTB2.75x3.50x1514S	2.75	3.50	
ZSTB3.00x3.50x1514S	3.00	3.50	
ZSTB3.00x3.75x1514S	3.00	3.75	
ZSTB3.50x4.25x1514S	3.50	4.25	
ZSTB3.75x4.50x1514S	3.75	4.50	
ZSTB2.50x3.25x1814S	2.50	3.25	18
ZSTB2.75x3.50x1814S	2.75	3.50	
ZSTB3.00x3.50x1814S	3.00	3.50	
ZSTB3.00x3.75x1814S	3.00	3.75	
ZSTB3.50x4.25x1814S	3.50	4.25	
ZSTB3.75x4.50x1814S	3.75	4.50	
ZSTB2.50x3.25x2314S	2.50	3.25	23
ZSTB2.75x3.50x2314S	2.75	3.50	
ZSTB3.00x3.50x2314S	3.00	3.50	
ZSTB3.00x3.75x2314S	3.00	3.75	
ZSTB3.50x4.25x2314S	3.50	4.25	
ZSTB3.75x4.50x2314S	3.75	4.50	

All sizes available in BMS version (BIOSS coronary bifurcation stent with RX delivery system). When ordering use Ref.Number, e.g.: ZSTB2.50x3.25x1514.

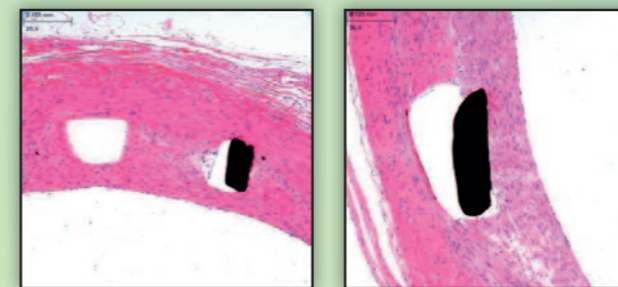
Innovative bifurcation stent system

Delivery system based on anatomical shape balloon minimizes the negative effects of procedure, protecting the carina tip from being crushed or damaged

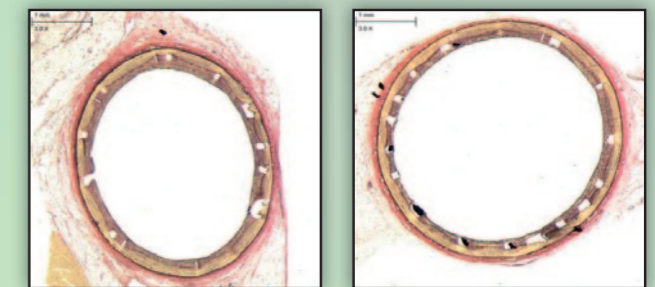


Implant construction allows Bioss stent adjust to vessel curvature

Proven safety and efficacy

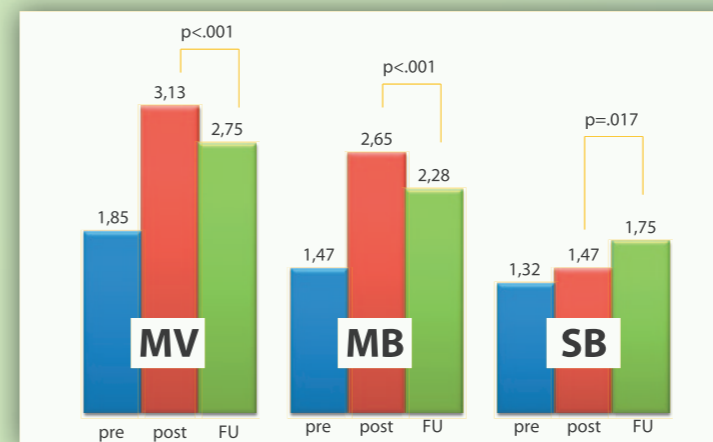


Histology images shows high biocompatibility of Bioss Expert and Bioss LIM assured by biodegradable polymer coating eluting Sirolimus or Paclitaxel



Preclinical trial 90 day results shows complete stent endothelialization with uniform, thin layer of neointimal tissue

QCA analysis – Change in MLD



Cumulative clinical results – 12 month (out of hospital)

- Myocardial infarction – 0%
- Stroke – 0%
- ST – 0%
- TLR – 7/63 (11%):
3x CABG, 2x POBA, 2x Stent
- TVR – 9/63 (14.3%)

7th European Bifurcation Club – 14-15 October 2011 – LISBON